

INDUSTRIAL INLET VALVES FOR 1-1/4" AND 1-1/2" HOSE

NOTE: Verify your Inlet Valve Size when ordering. For other 1-1/4" or 1-1/2" Inlet Valves and 1-1/4" Pin-Jack Inlet Valves not pictured here, see the Residential Catalog.



Stainless Inlet Valve with Key Lock
For 1-1/4" Hose
WS-629XAK with Micro-Switch
WS-629AK with No Switch
WS-629JAK with Pin Jack
For 1-1/2" Hose
WS-832XAK with Micro-Switch
WS-832AK with No Switch



Stainless Inlet Valve
For 1-1/4" Hose
WS-629X with Micro-Switch
WS-629 with No Switch
WS-629J with Pin Jack
For 1-1/2" Hose
WS-832X with Micro-Switch
WS-832 with No Switch



Stainless Inlet Valve with TwistLock
For 1-1/4" Hose
WS-629XA with Micro-Switch
WS-629A with No Switch
WS-629JA with Pin Jack
For 1-1/2" Hose
WS-832XA with Micro-Switch
WS-832A with No Switch



Utility Inlet
For 1-1/4" Hose
UA-201X with Micro-Switch
UA-201 - No Switch
For 1-1/2" Hose
UA-221X with Micro-Switch
UA-221 - No Switch



Polished Aluminum Floor Inlet
For 1-1/2" Hose
ALP-232X with Micro-Switch
ALP-232 with No Switch



Polished Aluminum Floor Inlet
For 1-1/2" Hose
ALP-242X with Micro-Switch
ALP-242 with No Switch



Cast Aluminum Back-up Housing SF-280
(Use only with ALP-242X and ALP-242)

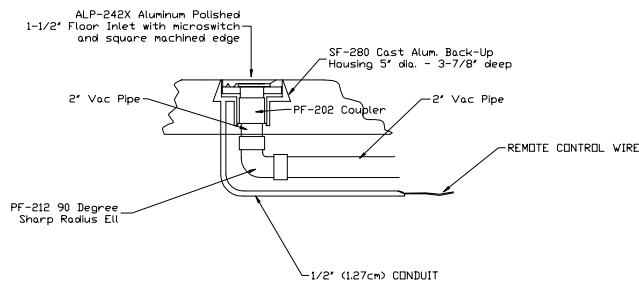
Typical ALP-242X/ALP-242 Floor Inlet Installation

Note:

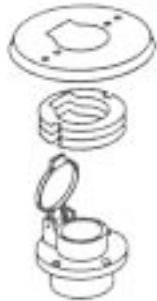
When placing the inlet into fitting, use a small ring of silicone rubber adhesive sealer on the bottom edge of the inlet stem to form a good seal to the fitting.

Note:

Should inlet drop too deep in cast housing, build up thickness of inlet by placing shims in (3) locations.



IS-33SM Installation



INDUSTRIAL INLET VALVES FOR 2" HOSE

(To be inserted into bell of 3" fittings)



Industrial Inlet Valve
IS-334X with Micro-Switch
IS-334 with No Switch



Industrial Inlet Valve With Lock
IS-334XA with Micro-Switch
IS-334A with No Switch



Stainless Steel Cover Plate
IS-33-P



Metal Spacer Unit
IS-33 SM
1/32" Thick

BACK-UP PLATES

NOTE: All Back-Up Plates come with two Tinnerman Nuts unless otherwise indicated.



SF-395
Flanged Back-Up Plate
for Metal Inlets
(Use with AF-210 A or B)



SF-297
Concrete or Tile Wall
Back-Up Plate for Metal
Inlets



SF-380-8
Masonry Back-Up
Plate for Metal Inlets



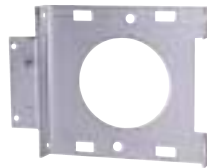
SF-297-8
Back-up Plate & Box for
Masonry Walls and
metal inlets



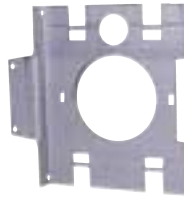
SF-250-7
Metal Box side for use
with SF-295 and SF-290
when an electrical enclosure
is required.



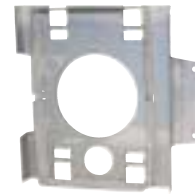
SF-270
Industrial Back-Up Plate
for Metal Inlets



SF-290
Metal Flanged Back-up
Plate for metal inlets



SF-295
Back-up Plate with
Knock-Out for metal inlets



SF-295-8
Combination SF-250-7
and SF-295

2" STEEL FITTINGS, 2" ALUMINUM FITTINGS AND MISCELLANEOUS



RTV-732
Silicon Adhesive for
Steel Fittings



SF-202A
Steel Slip Coupler
and Bushing for 3 x 2
Steel Fittings



SF-207
2" O.D. Steel Tubing
8' Length only



SF-207-6
6" Length Steel
Tubing for Firewalls



SF-213
90 Degree Steel
Sweep Ell



55554
Gasket for 4-Hole
Fittings



AF-210B
Aluminum 90° Flanged
Ell with screws and
gasket for 1-1/2" Inlets



AF-210A
Aluminum 90°
Flanged Ell with
screws and gasket for
1-1/4" Inlets



SF-214
45 Degree Steel TY



SF-215
90 Degree Steel
TY



SF-216
45 Degree Steel
Ell



SS-200
Heat Shrink Sleeve
for 2" Metal Tubing

TC-161
Tubing Cutter
C-Shape
TC-1624
Blade for TC-161



TC-261
Plastic Handle
Tubing Cutter
TC-2641
Blade for TC-261



VG-160
Vacuum Gauge

